

The Malthouse:

A Building With Deep Roots



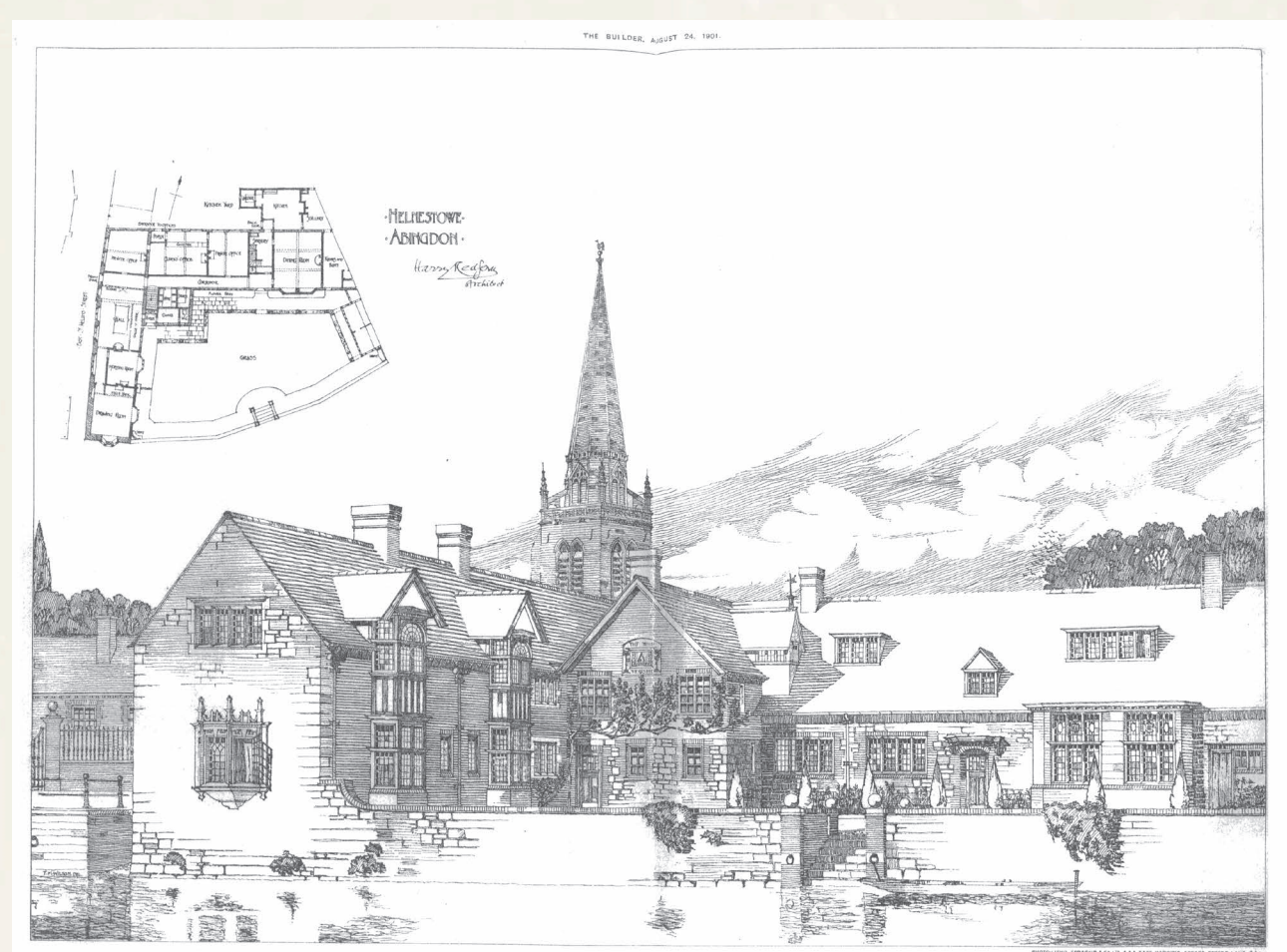
▲ The Malthouse, ca. 1895



▲ The yard ca. 1898 while still used by Copeland



▲ Courtyard (north) wall



▲ Sketch from Harry Redfern, Architect



▲ The Malthouse, ca. early 1900s

Layers of History in Stone & Timber

WWA's offices occupy one of Abingdon's most historic and adaptable buildings, its story stretches back over four centuries, despite its early 20th-century appearance.

Originally part of **Abingdon Abbey's estate**, the building at **60 East St Helen Street** began life as a **dyehouse**, recorded in Amyce's 1554 survey. By the **mid-1600s**, it had become a malthouse — part of the town's thriving malting trade.

In the **18th century**, it was run by the **Tompkins family**, prominent Baptist maltsters, and a **1748 datestone** still recalls their time here. The business continued into the **19th century** under the **Copeland family**, linking it to Abingdon's brewing heritage.

By **1900**, the building had fallen into disrepair and was **reconstructed by architect Harry Redfern**, who added many of the Arts & Crafts-inspired features still visible today.

Converted to offices by D.B. West for the Culham Educational Foundation, later purchased by WWADP and fully renovated in 2004.

In 2021, the practice merged with London based **Archadia Architects**, becoming **West Waddy Archadia**, continuing the building's current purpose of creative office use.



▲ 'Helnestow' private house and solicitors office for Mr Pryce 1899/1901 – c1945



▲ "Fellows Close" private house 1945 - 1948



Today, The Malthouse is not only our workplace, it's a symbol of our commitment to heritage, sustainability, and evolving use. We're proud to be part of its long and layered story.

From The Knowl to The Malthouse:

140 Years of Innovation, Craft and Community



1885 - 1930: J.G.T. West

In 1885, John George Timothy West opened an architectural practice in Abingdon from his home, The Knowl on Stert Street. Trained under local architect Edwin Dolby, J.G.T. West was not only a designer, in 1887, West advertised his services in Kelly’s Directory, listing himself as architect, auctioneer, surveyor, and house agent. a testament to the multi-faceted nature of early architectural practice.

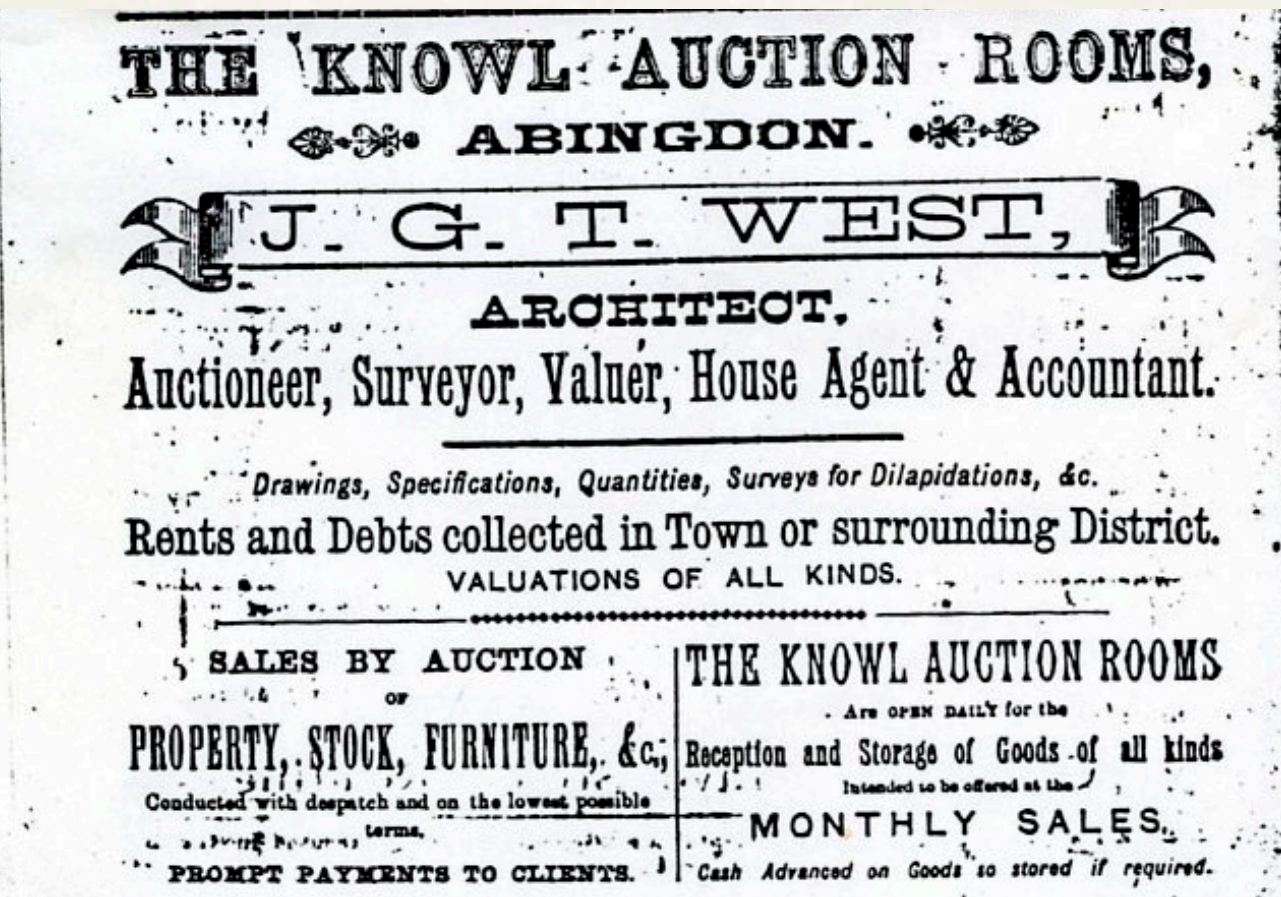
His early work was shaped by the limits of horse-and-trap travel, leading to projects focused in and around Abingdon.

His first major commission was the **Convent of Mercy** extension in 1892, a project that marked the start of a long professional relationship with religious and civic institutions.

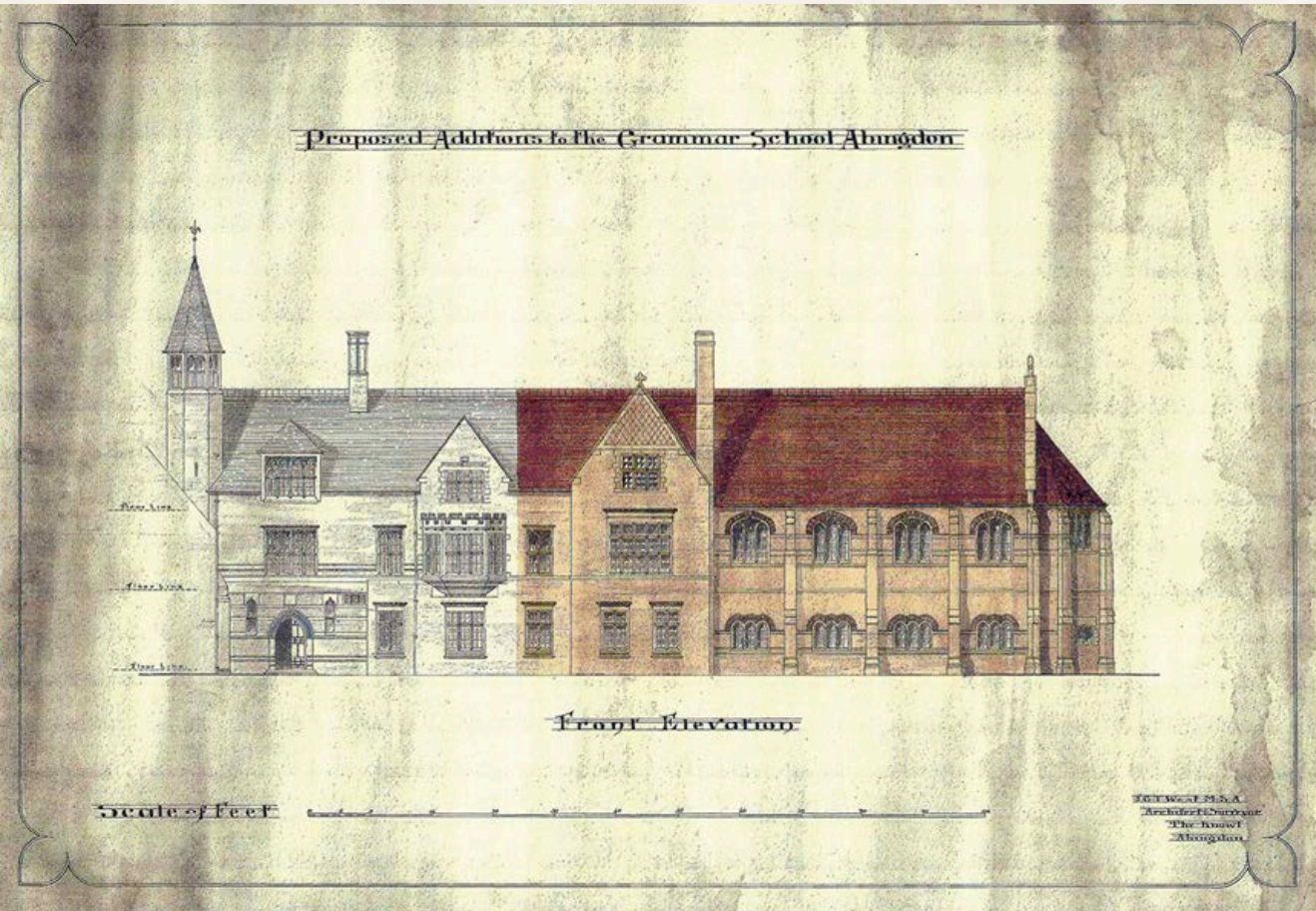
He is credited with early plans for **Abingdon School**, designing the **School Chapel and Gymnasium** in 1899.

Other local landmarks include the **Abingdon Free Library** and designs for houses in Albert Park.

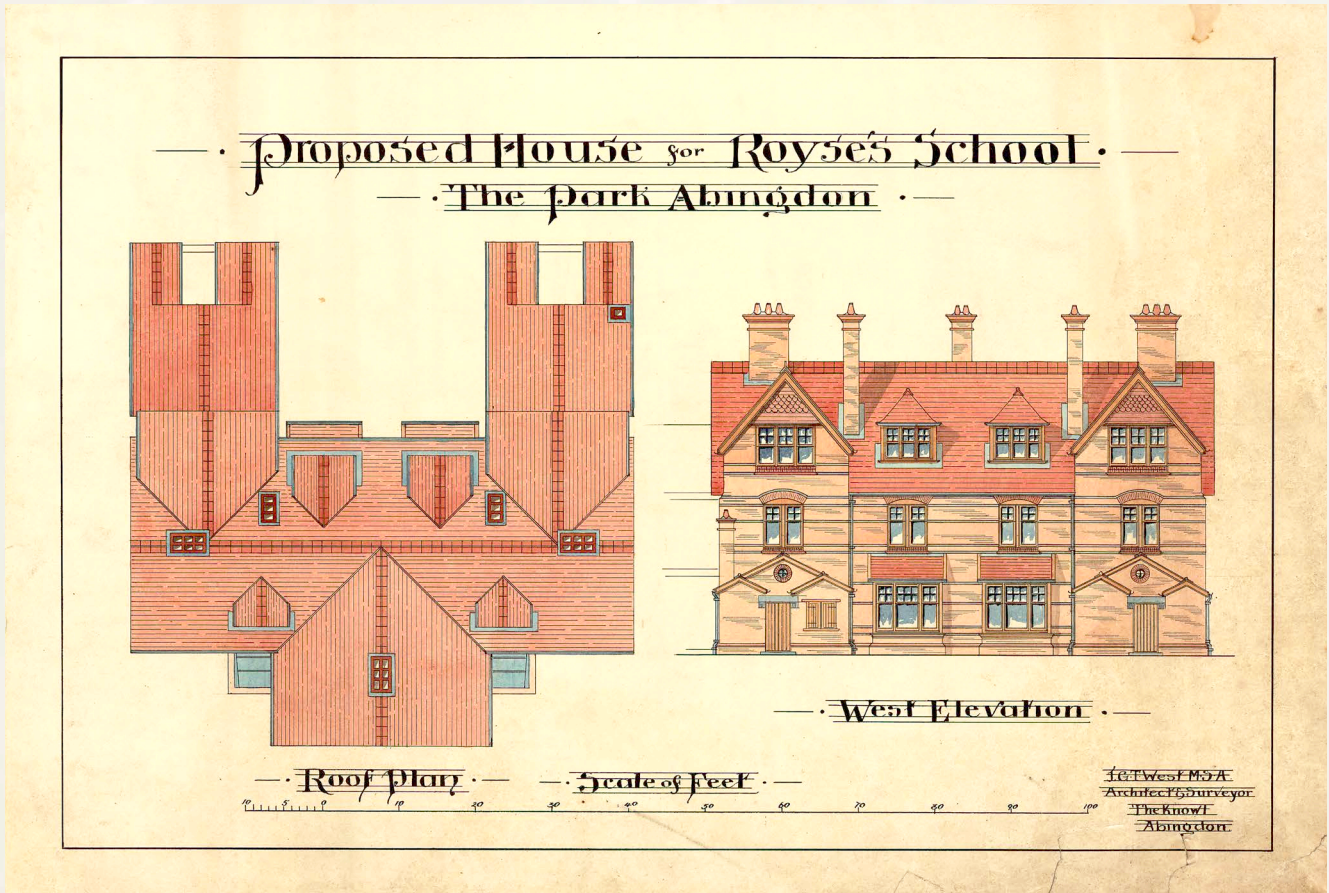
J.G.T. also worked on **Abingdon Hospital**, laying a foundation for the firm’s long involvement with healthcare design.



Advert dated 1887



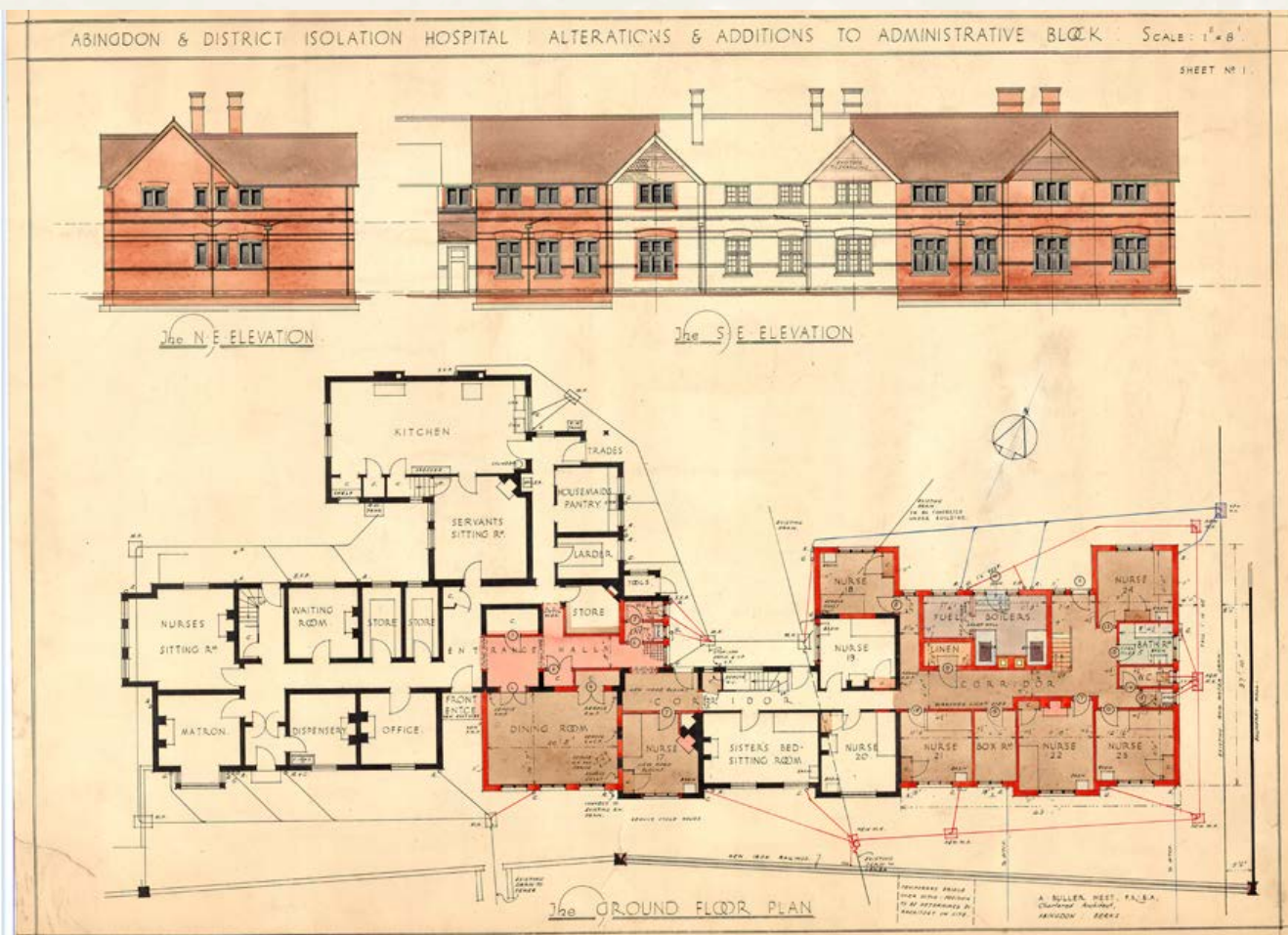
Abingdon School, original water colour



Design for proposed house for Royces School



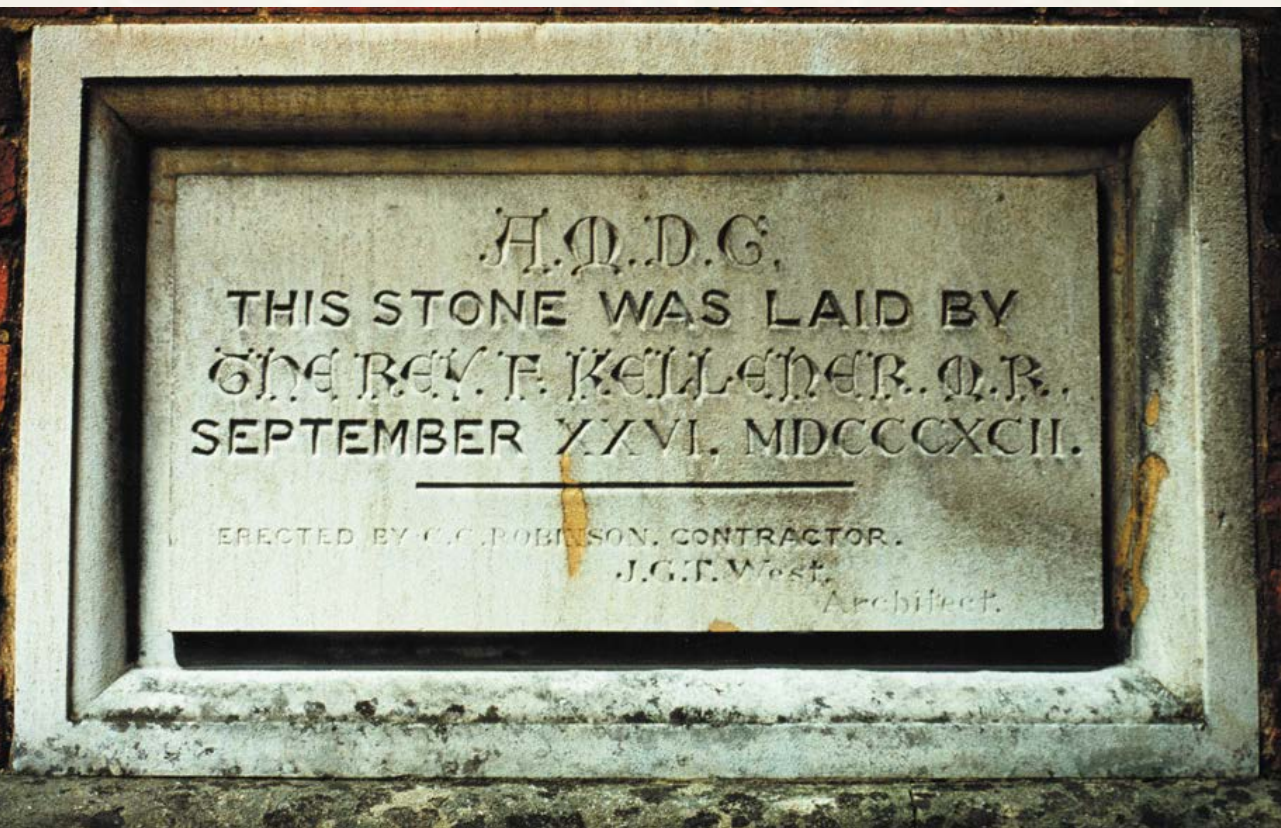
c.1905, JGT West on horseback, with father and granddaughter Mar outside 'The Knowl'.



Abingdon & District Isolation Hospital, original sketches



Abingdon Hospital, foundation stone



Convent of Mercy, foundation stone

J.G.T. West’s story is one of innovation, ambition, and deep ties to his hometown, a legacy that would shape the firm for over a century.

From The Knowl to The Malthouse: 140 Years of Innovation, Craft and Community



1919 - 1950s: A.B. West

In 1919, Archibald Buller West joined the practice after returning from overseas service as a Government surveyor. He brought fresh vision, artistic flair, and a commitment to expanding the firm's scope.

He took over the practice after his father's death in 1930.

Known for his elegant, expressive drawing style — seen in plans for the **Abingdon Isolation Hospital**, **Wantage Hospital** (1926 competition winner), and school projects.

Designed the **New Coronet Cinema in Didcot** (1933), showcasing a confident Art Deco flair, with the front elevation presented as showing the screening of King Kong.

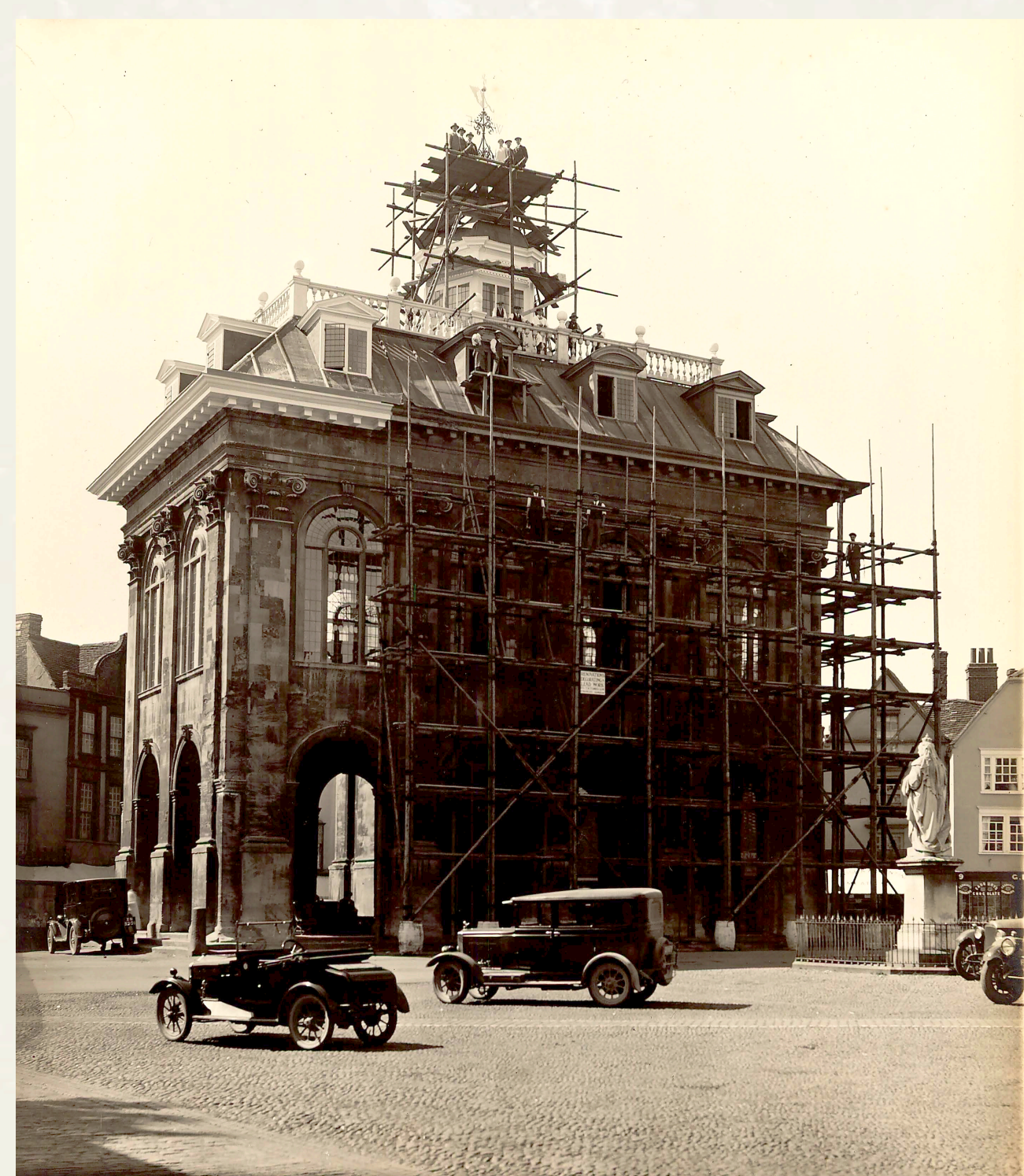
Commissions for the **Oxford Co-operative Society** included retail, warehouse and even an ice cream factory.

With continued interest in conservation and historic building repairs, he prepared drawing proposals for **Royse's Court** façade and restoration drawings for historic buildings that were unbuilt, possibly due to WWII.

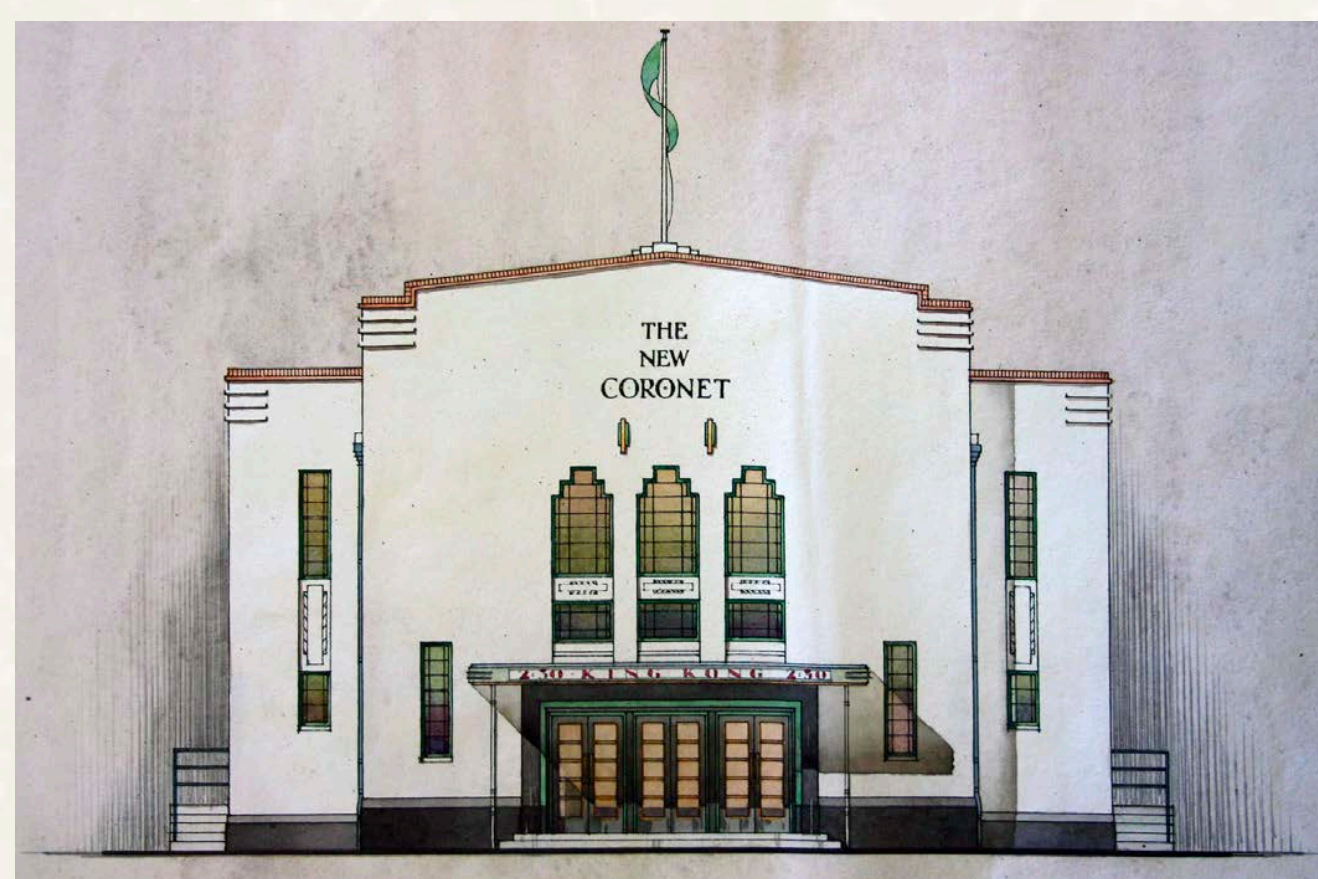
During WWII, the practice designed **wartime nurseries**, temporary housing, and food production facilities.

Designed a new **grandstand for Abingdon Football Club** in 1948.

Designed post-war homes including the **Picklers Hill development**, and was responsible for imposing strict design covenants to maintain architectural quality.



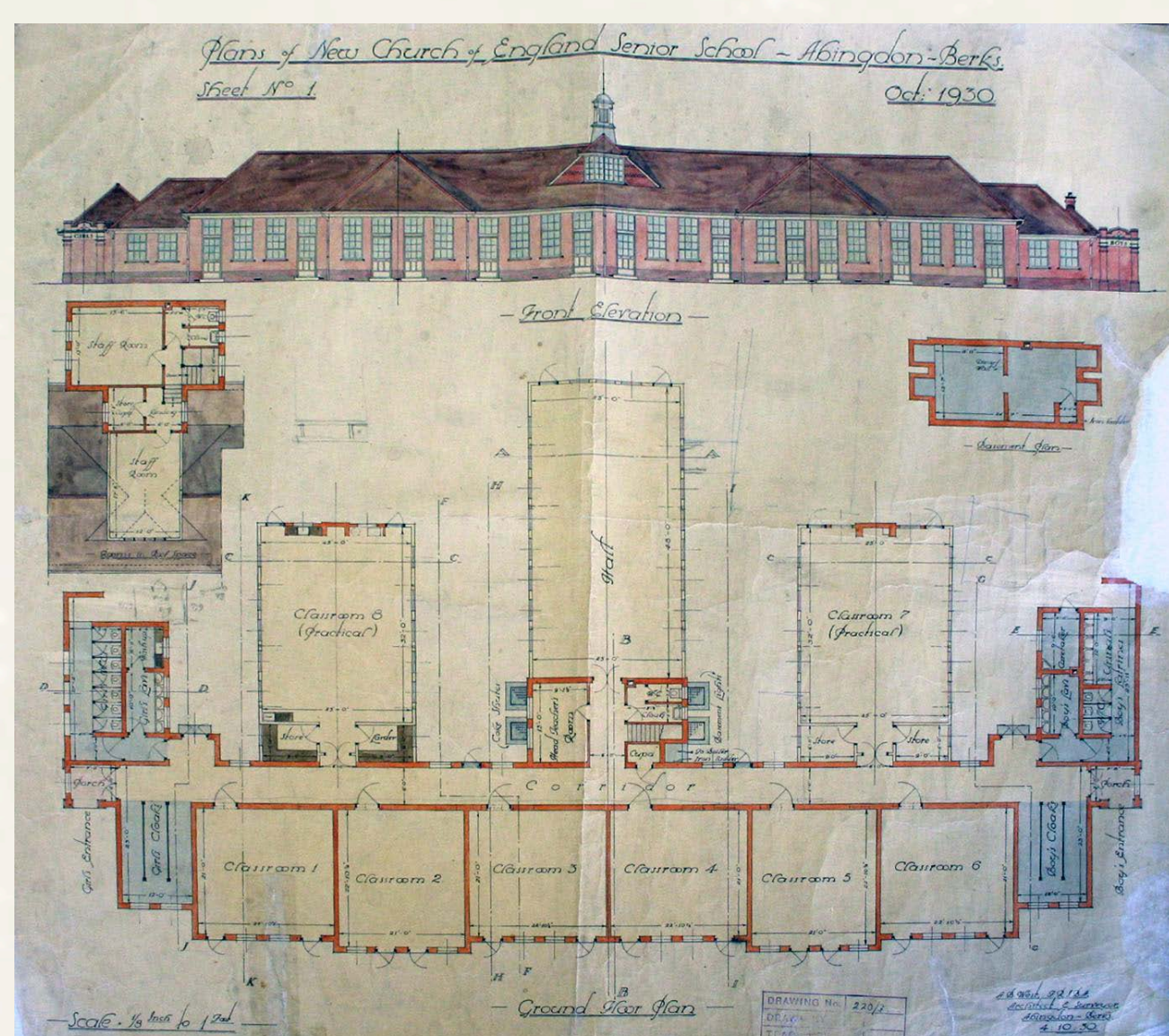
Restoration of County Hall, circa. 1930



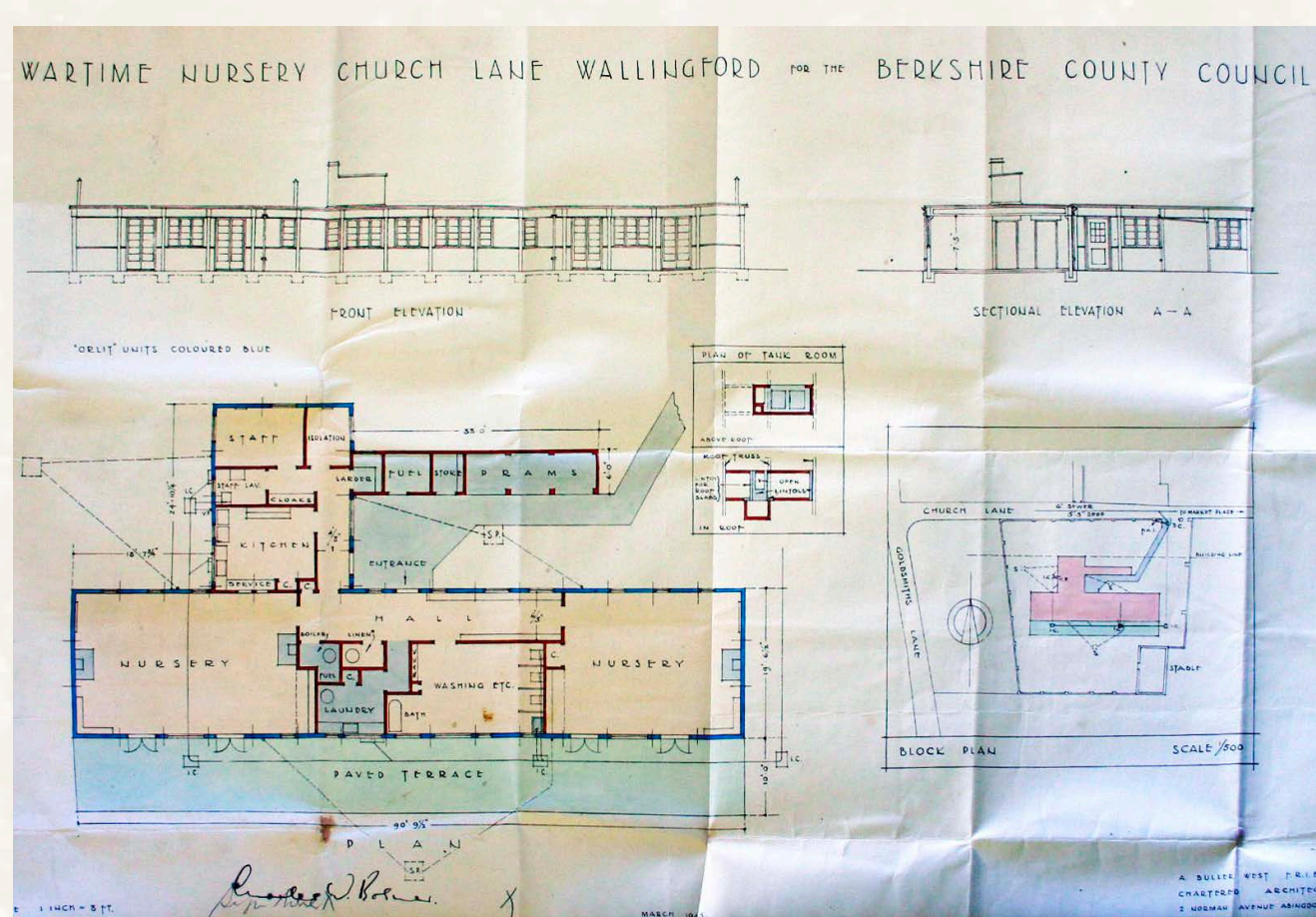
Proposal for the New Coronet Cinema, 1933



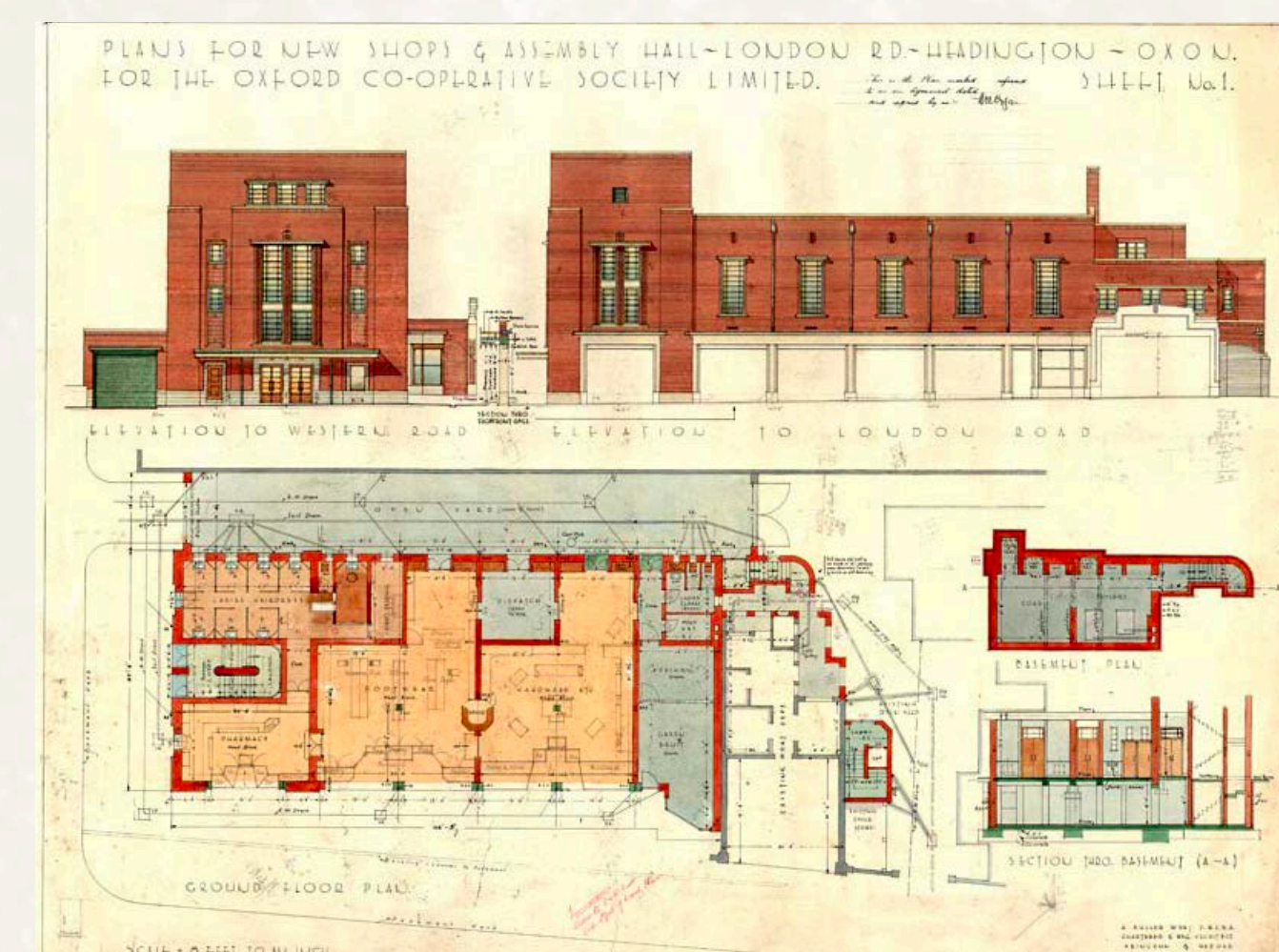
Official opening of Wantage Hospital, June 1927



Plans of New Church of England Senior School, Abingdon, October 1930



Contract drawing, dated 29 September 1943 for Wartime Nursery



A scheme drawing for the Oxford Co-operative Society, Headington

A.B. West blended civic responsibility with stylistic innovation, shaping the architectural identity of 20th-century Abingdon.

From The Knowl to The Malthouse:

140 Years of Innovation, Craft and Community



1950s - 1980s: D.B. West

Duncan Buller West, a third-generation of the West family, joined the practice in 1952 after training at the Oxford School of Architecture. With him came a renewed focus on housing, restoration, and public architecture.

College work includes, measured drawings of the **Radcliffe Camera** in Oxford and the **Monument of Lysicrates** in Athens, the practice still retains some of these drawings.

Oversaw restorations of the **Brick Alley Almshouses**, **Twitty's Almshouses**, and **Stratton House**, ensuring historic Abingdon remained vibrant and lived-in.

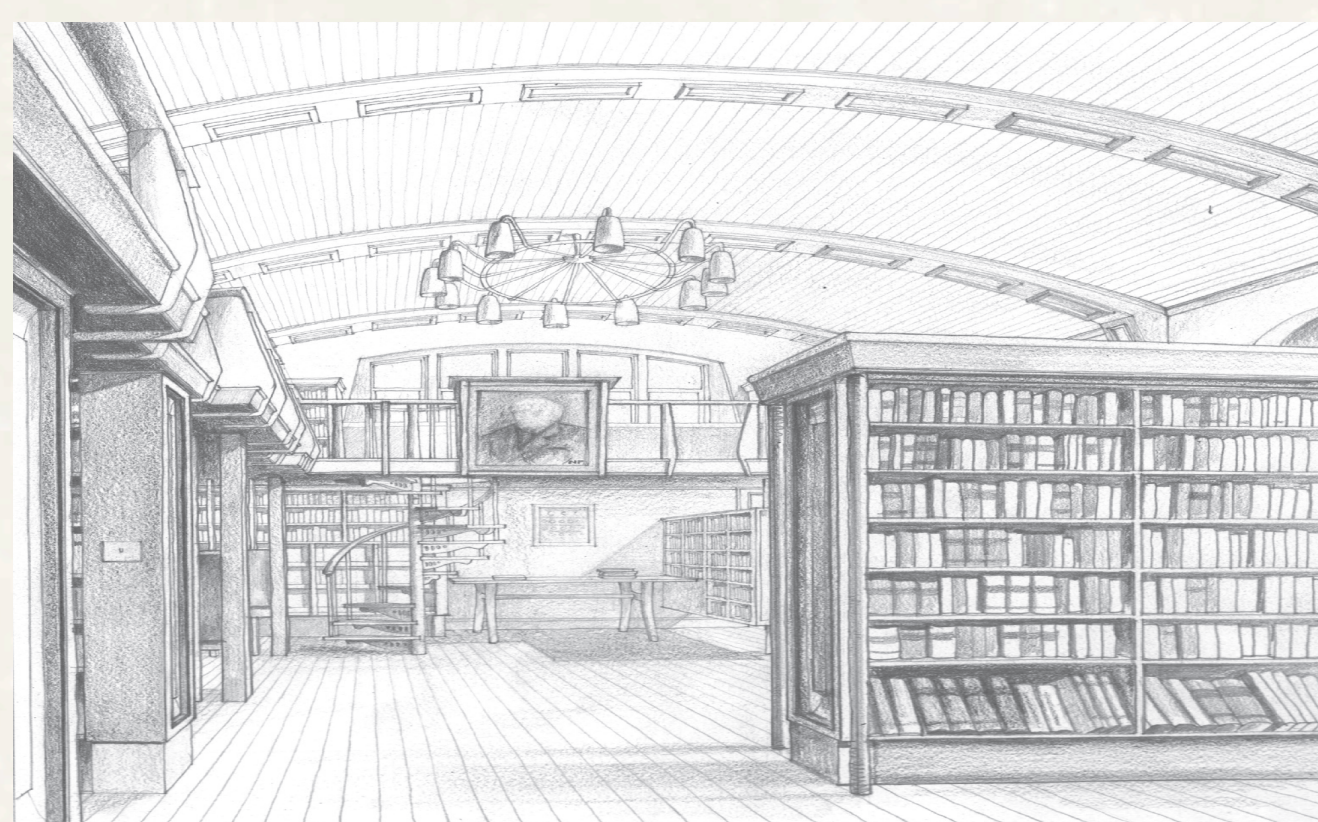
Designed the **Grundy Library** at Abingdon School (opened by HRH Princess Margaret in 1962) and converted **Waste Court Annex** into student accommodation.

Led major local schemes in the 60s and 70s: **Abbey Baptist Chapel** in Checker Walk, **Ock Street flats** for Christ's Hospital, and the remodelling and repair of **Stratton House**, Bath Street.

Significant commissions in the late 70s and early 80s: **Strict Baptist Mission Headquarters** in Abbey Close and the associated redevelopment of **Checker Walk**, Abingdon, plus sheltered housing for elderly residents in Abingdon and further a field in Wantage (**Pilgrim Homes**) and Woking (**Woking Rail Care Centre**).



Student drawing of the Radcliffe Library, Oxford



Grundy Library original design proposal



Abbey Baptist Chapel



Stratton House, Bath Street



Checker Walk development, Abingdon



Pilgrim Homes, Wantage

D.B. West's work helped rebuild post-war Abingdon, blending thoughtful design with everyday needs to reflect a changing society.

From The Knowl to The Malthouse:

140 Years of Innovation, Craft and Community



1980s - 2000s: Philip Waddy

With D.B. West nearing retirement, architect Philip Waddy joined the practice in the 1980s, bringing with him fresh energy, award-winning experience, and a commitment to digital innovation.

The partnership marked a generational shift and the practice became known as **West Waddy**.

Early 1990s saw the practice embrace CAD technology and transition away from traditional drawing.

West Waddy remained busy on projects including **Marcham Road Health Centre**, **Long Furlong Medical Centre**, and **Kingsdown Medical Centre** as well as **The Bird in Hand Hotel**.

Educational projects continued with long-standing clients such as **Abingdon School refurbishments**, **Ruskin College Student Hall**, and a new sixth form centre at **Our Lady's Convent Senior School**, as well as major alterations and extensions to **Lord Wandsworth College**.

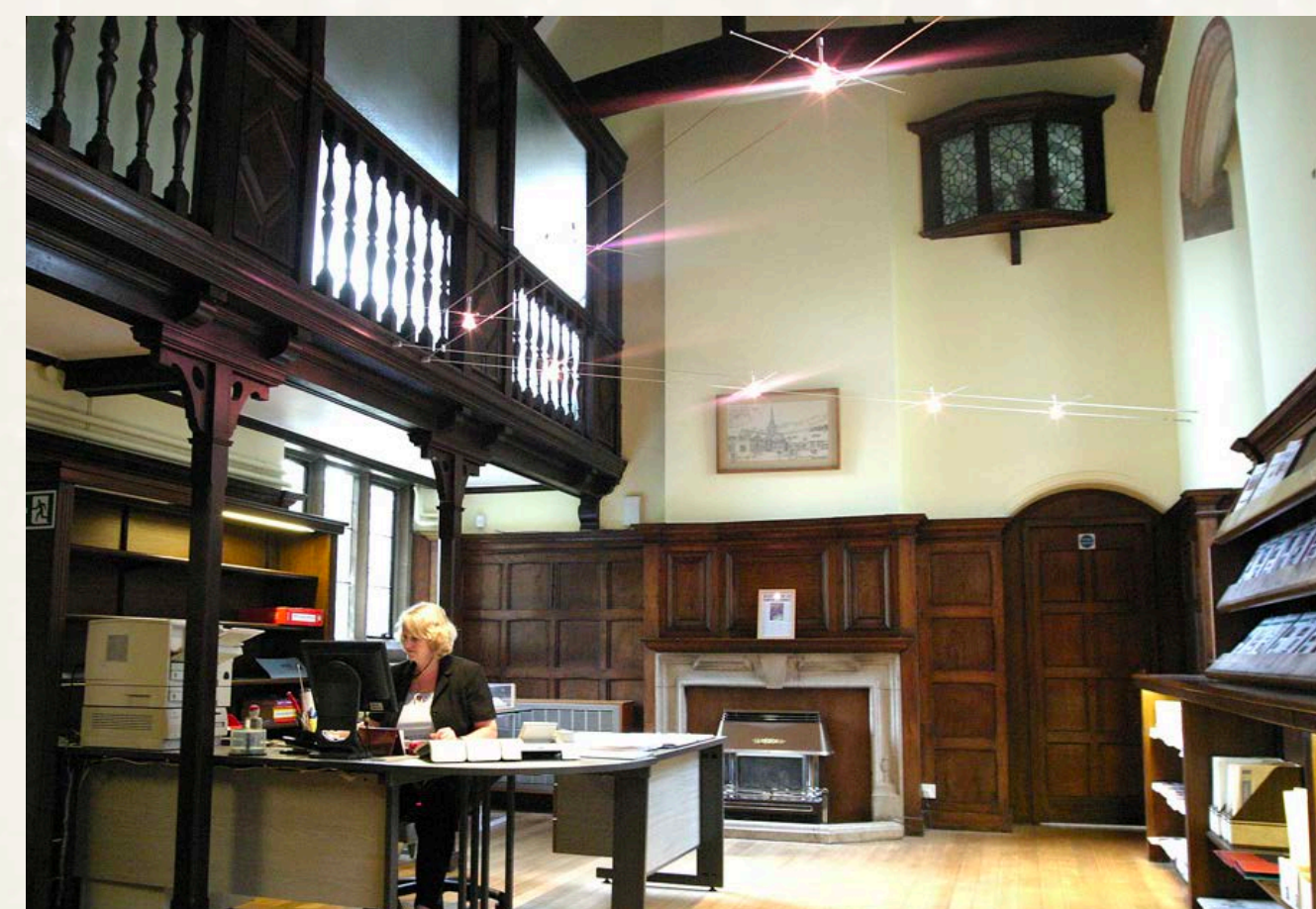
In 2003, the practice moved to **The Malthouse**, adapting the historic building into a modern office while preserving its heritage.



▲ The Bird in Hand Hotel



▲ Beatrice Webb House, Ruskin College



▲ Reception area at The Malthouse



▲ Marcham Road Health Centre



▲ Lord Wandsworth College



▲ The Malthouse viewed from across the river



▲ Long Furlong Medical Centre



▲ The cupola repair at St John the Baptist, Kingston Bagpulze.

Philip Waddy brought innovation, creative design and heritage expertise to the partnership, bringing the practice into the modern era.

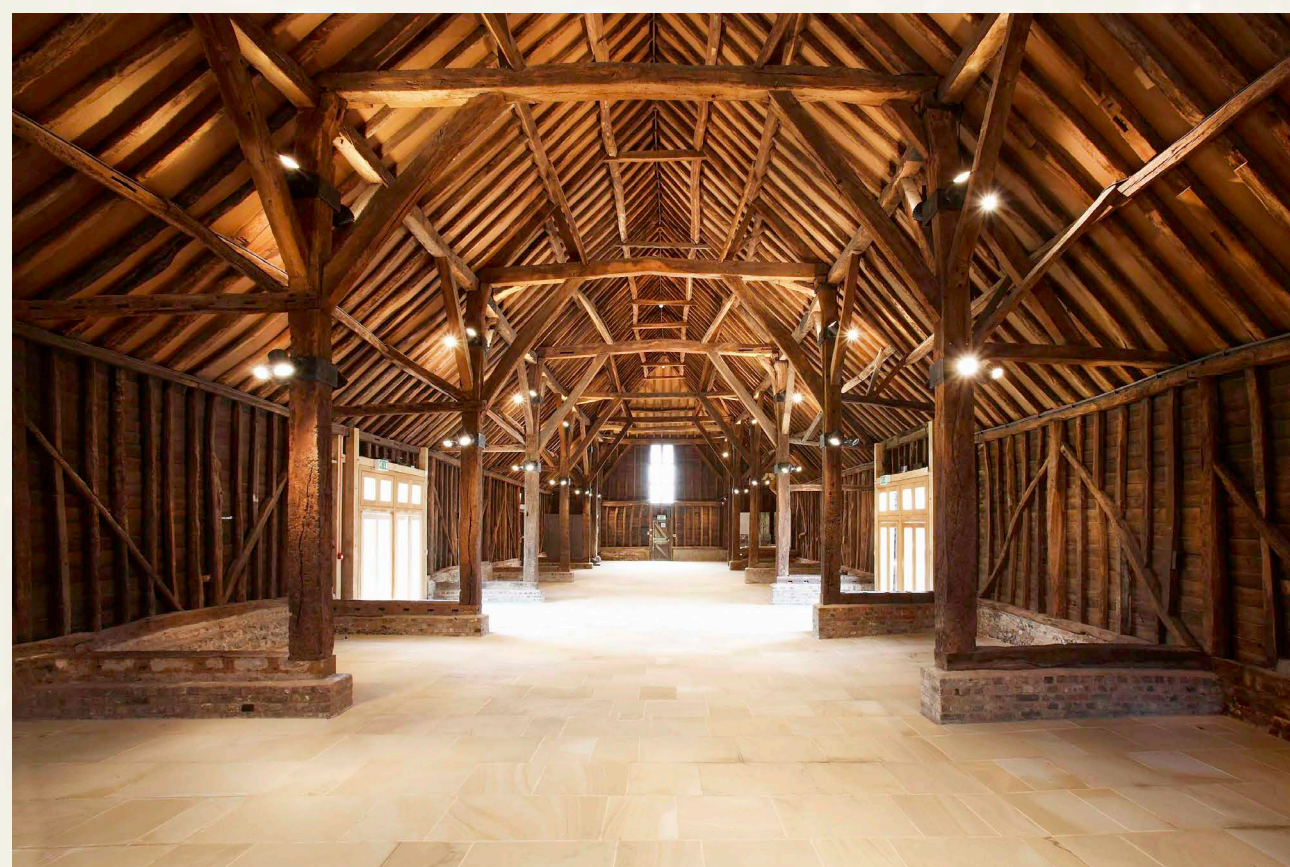
From The Knowl to The Malthouse: 140 Years of Innovation, Craft and Community



Philip Waddy, John Ashton and Steve Simkins



Philip Waddy's first competition win



Heritage Centre, Manor Farm, Ruislip



Oakhouse Barns Conversion, Hampstead Norreys



Conservation and restoration of The Abbey, Sutton Courtenay

2000s - 2010s: Time to Diversify

At the start of the new millennium, the practice expanded beyond architecture, bringing planning, urban design, and heritage consultancy into the mix. By teaming up with a specialist town planning consultancy, West Waddy ADP was formed, marking a new chapter in how we design and shape places.

Conservation work reached new heights and included restoration of **Manor Farm, Ruislip** for Hillingdon Borough Council as well as numerous Church and listed building projects.

Educational projects continued for longstanding clients **Abingdon School** and **Our Lady's School**.

Town Planning and masterplanning for **Oxford Brookes University, Ruskin College** and **Headington School**, as well as major redevelopment for **EF International, Oxford**.

Focus continued on listed churches, almshouses, and barn conversions across Oxfordshire.

Urban regeneration projects paired sustainability with historical sensitivity.



EF International, Oxford



Gypsy Lane Campus Masterplan, Oxford Brookes



Our Lady's Abingdon



1500 New homes, Woodstock, Oxfordshire



All Souls College, Façade Restoration



1000 New homes, Carterton, Oxfordshire

Conservation is not just preservation — it's reimagining the old for the future.

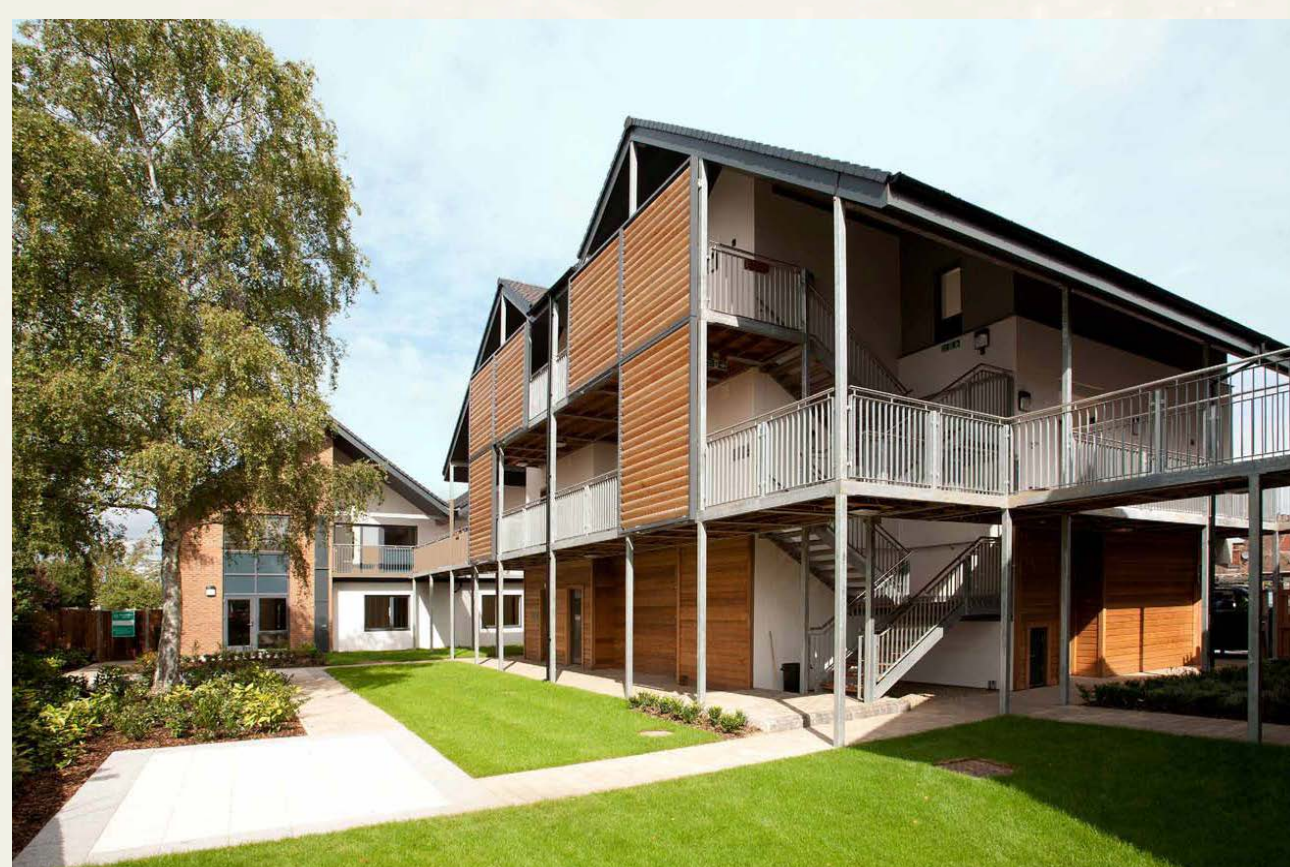
From The Knowl to The Malthouse: 140 Years of Innovation, Craft and Community



WWA Team, 2025



Long Hanborough Surgery, Long Hanborough



Castlemaine Court, Byfleet, Surrey



Maidment Court, Poole, Dorset



Michaelmas Court, Thurston

2010s - 2020s: Looking Forward

In 2014, West Waddy ADP purchased Archadia Architects, London, a practice with specialist expertise in social and private housing, healthcare, and special needs services. This partnership strengthened our collective commitment to people-centred design and broadened our reach across sectors and regions.

Today, building on 140 years of practice, WWA is a multi-disciplinary team of architects, planners, and urban designers creating places that are sustainable, inclusive, and rooted in community.

RIBA 2030 signatories committed to reducing energy use, cutting emissions, and adding social value through design. Climate-conscious housing projects include, **Tectronics in Faringdon**, **Bulmer House in Petersfield**, and **Michaelmas Court in Thurston**.

Our **Certified Passivhaus designers** deliver low-energy, zero-carbon buildings across the South East. At **St Mary's in Torrington, Surrey**, we're creating affordable, energy-efficient housing for older people.

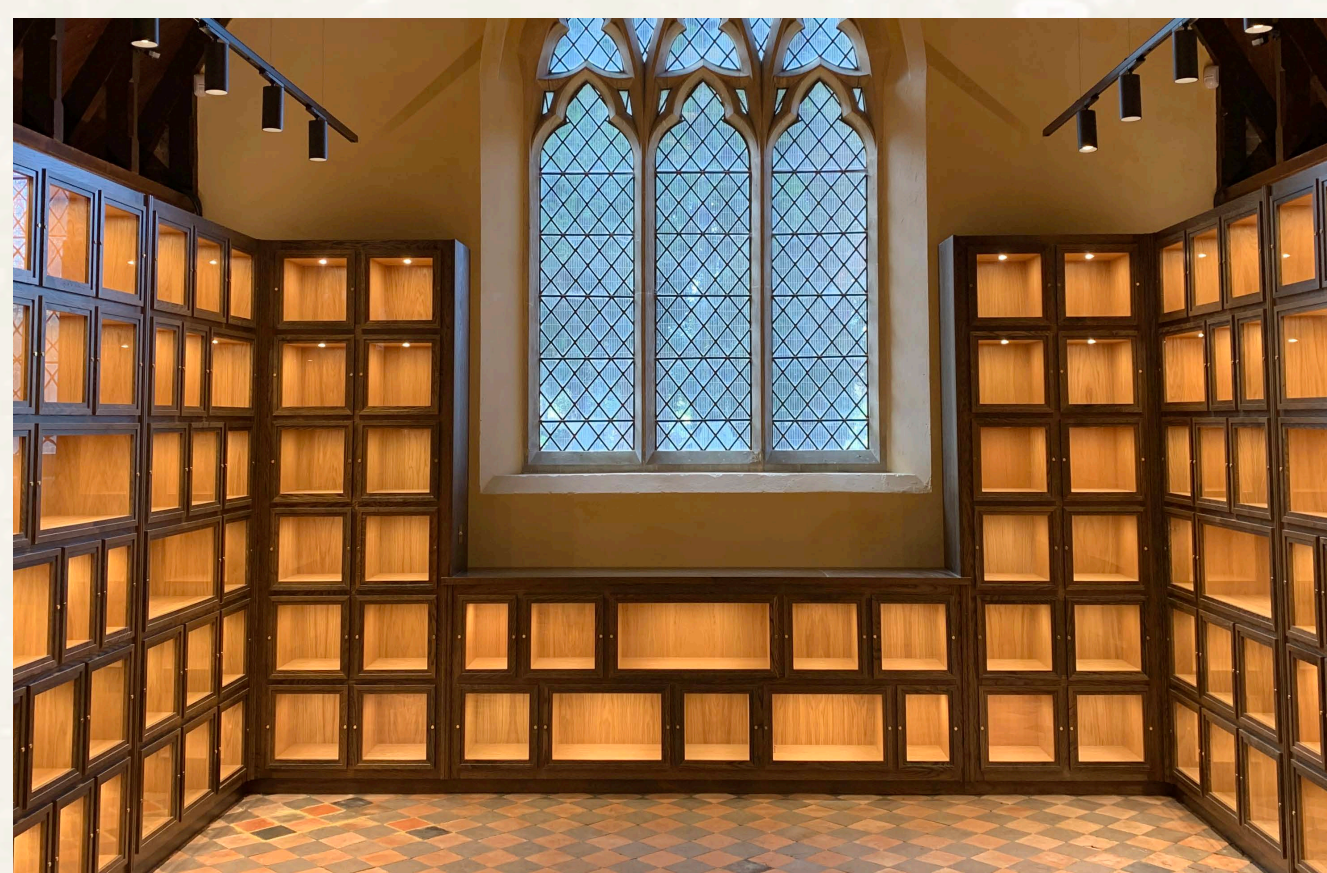
Heritage meets innovation in projects like the careful restoration of **All Souls College**, to transforming **Winterbourne Medieval Barn** into a community hub, bringing new life to old buildings with care and vision.



Lord Wandsworth College: Science Centre



Abingdon Preparatory School, Oxfordshire



Fairmile Cemetery Columbarium



Winterbourne Medieval Barns, Bristol



Bulmer House, Petersfield



St Mary's, Torrington, Long Ditton

We believe in designing not just for today, but for generations to come, blending beauty, legacy and environmental responsibility in every project.