

WILD (LIFE) CITY CULTIVATING SUSTAINABLE URBAN FUTURES

Wild (Life) City: Cultivating Sustainable Urban Futures reimagines Birmingham's Duddeston Manor Estate as a prototype within a wider network of post-war modernist housing around the city.

The project responds to food poverty, declining agricultural identity, and unequal access to healthy produce, challenging the legacy of modernist planning. It began as an exploration of how these rigid, top-down estates could shift toward a Situationist approach, prioritising participation, social interaction, and lived experience. This is articulated through the concept of "vertical plotlands"—a reinterpretation of self-sufficient, suburban growing spaces translated into dense urban housing, enabling residents to actively cultivate food and shape their environment.

The design integrates biodiverse landscapes, market gardens, agroforestry, and high-tech hydroponic systems across multiple scales, from private balconies to shared community infrastructure. Existing towers are retained and transformed into "living frameworks" that embed food production, education, and social space within the architecture itself.

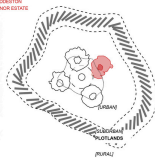
A key strategy is the localisation of infrastructure, particularly water. Challenging Birmingham's reliance on the Elan Valley supply, the proposal incorporates rainwater harvesting, greywater recycling, and large-scale on-site storage to create a visible, decentralised water system. This reduces dependency on distant sources while empowering residents to steward essential resources collectively.

The project proposes a scalable model for regenerative urban living—dissolving rural-urban divides, reimagining modernist housing, and positioning cities as sites of production, resilience, and collective agency.

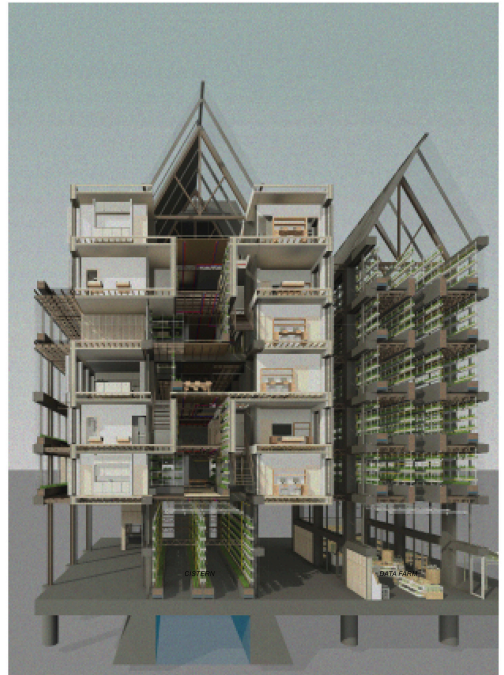
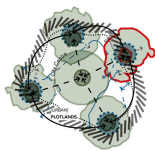
SOCIAL HOUSING C1960 HIGHRISE BLOCKS
CONSTRUCTED AROUND ARTERIAL RING ROAD



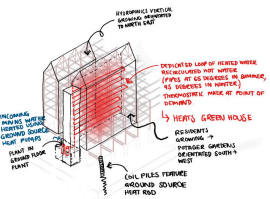
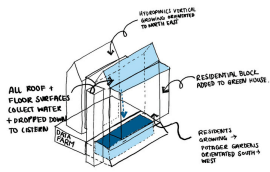
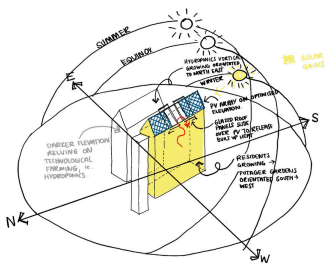
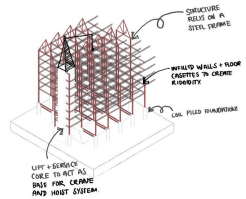
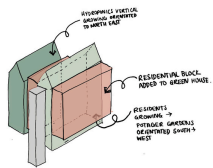
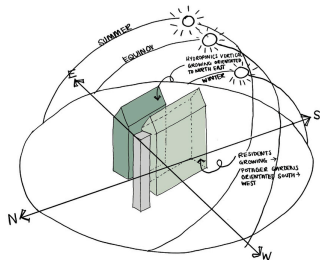
SUBURBAN PLOTLANDS - BLURRING THE
BOUNDARIES OF URBAN AND RURAL
CONTEXTS



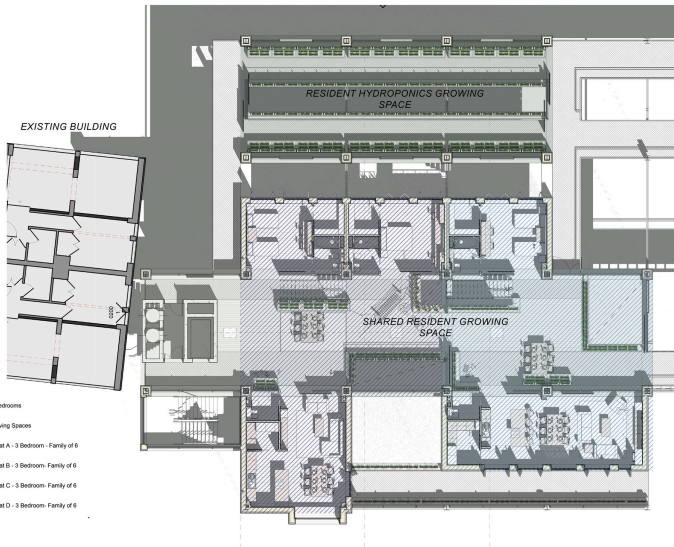
VERTICAL PLOTLANDS AND GROWING ISLANDS
CENTRES ON SOCIAL HOUSING C1960 HIGHRISE
ESTATES



DETAIL + TECHNOLOGY



TYPICAL MODULE FLOOR PLAN



GROWING ESTATE VISION AT DUDESTON MANOR ESTATE

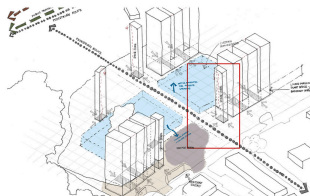


KEY

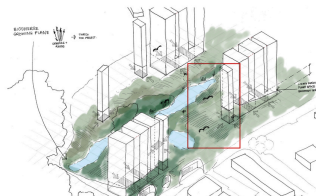
-  Circulation cores, interconnecting streets, and functions as service risers
-  Residents greenhouse growing spaces with flexible positioning
-  Vertical Farming greenhouses
-  External Vertical Farming
-  Fixed external balcony growing spaces
-  Community kitchen, restaurant, washing kitchen and teaching hub for growing
-  Modern plotlands
-  Biodiverse raised ground terrain with natural swimming pools
-  Market and data farm
-  Water Stores
-  Solar Panels

GROWING ESTATE VISION AT DUDDESTON MANOR ESTATE

WATER CISTERN, PLANT AND DATA FARM LOCATED BELOW GROUND PLANE



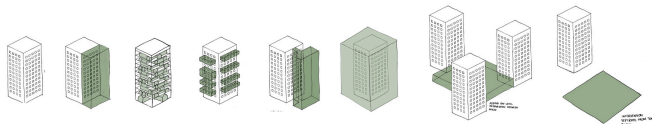
BIODIVERSE RAISED GROWING GROUND PLANE



SUPERSTRUCTURE WITH NEW INFILL RESIDENTIAL FLATS

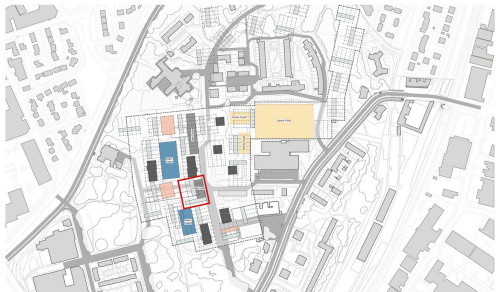


SUPERSTRUCTURE WITH NEW INFILL GROWING SPACES



SITE MASTERPLAN

INHABITATION BELOW THE RAISED GROUND PLANE



INHABITATION AT THE RAISED GROUND PLANE LEVEL



LIFE ON THE ESTATE

PRODUCE MARKET ACCESSED FROM THE RAISED GROUND PLANE



RESIDENTS' CENTRAL POTAGER GARDENS



RESIDENT'S SURPLUS PRODUCE MARKET



RESIDENT'S BEDROOM LOOKING ONTO RESIDENT'S POTAGER GARDENS



HYDROPONIC COMMERCIAL GROWING SPACES



EXTENDED FAMILY KITCHEN / LIVING SPACE



RESIDENT'S SHARED HYDROPONICS FARM



EXTERNAL ACCESS CORRIDOR

